



JS PUMP

RS Series



RS Dewatering Pumps

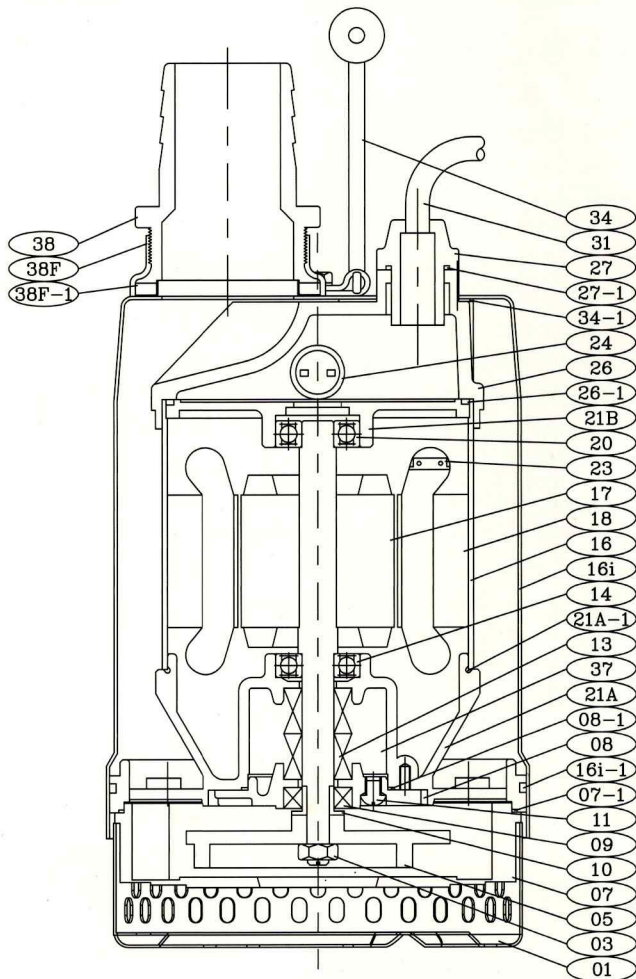
Mine & sites dewatering, domestic & commercial dewatering, fountains & waterfalls

Top discharge dewatering pumps with slimline design that allows pumps to fit into casings or pits. Some models are available in High Head construction to meet required performance.

Construction Material

- Top discharge provides maximum motor cooling for continuous duty operation.
- Double mechanical seals (0.25kw and above).
- Class F motor insulation.
- Shaft sleeve saves on shaft wear due to abrasives and corrosion.
- Additional lip seal protection keeps impurities and abrasives away from the mechanical seals.
- Thermal overload protection guards against high amperage and high temperature.
- Enhanced cable entry sealing system.

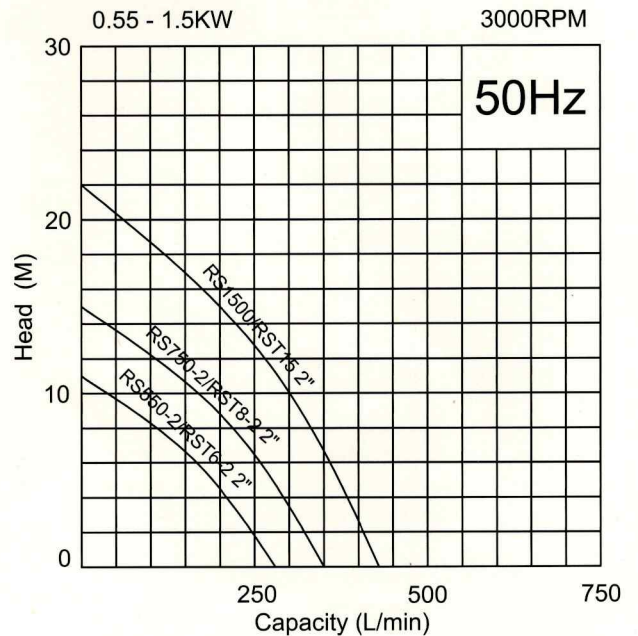
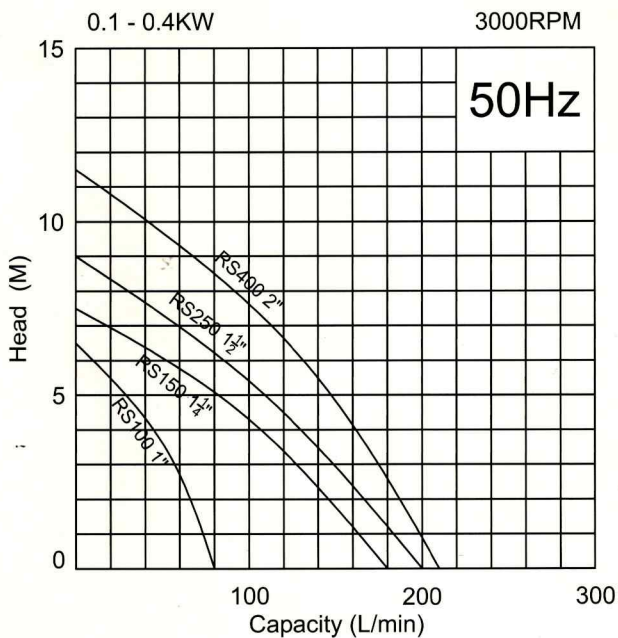
NO.	DESCRIPTION	MATERIAL
01	STRAINER	FC 200
03	NUT	SUS 304
05	IMPELLER	FCD 400
07	PUMP HOUSING	FC 200
07-1	ORING	NBR
08	OIL CHAMBER COVER	FC 200
08-1	ORING	NBR
09	LIP SEAL (BOTTOM)	NBR
10	SHAFT SLEEVE	SUS 304
11	PLUGS	SUS 304
13	MECHANICAL SEAL	
14	BEARING (BOTTOM)	
16	MOTOR CASING	SUS 304
16i	PUMP OUTER CASING	SUS 304
16i-1	ORING	NBR
17	ROTOR SHAFT	SUS 304
18	STATOR	
20	BEARING (UP)	
21A	BOTTOM BEARING HOLDER	FC 200
21A-1	ORING	NBR
21B	MOTOR UPPER COVER	FC 200
23	OVERLOAD PROTECTOR	
24	CONDENSER	
26	UPPER COVER	FC 200
26-1	ORING	NBR
27	CABLE GLAND	
27-1	ORING	NBR
31	CABLE	PVC
34	HANDLE	
34-1	GASKET	NBR
37	OIL	T-32
38	DISCHARGE OUTLET	PP
38F	FLANGE	SUS 304
38F-1	GASKET	NBR

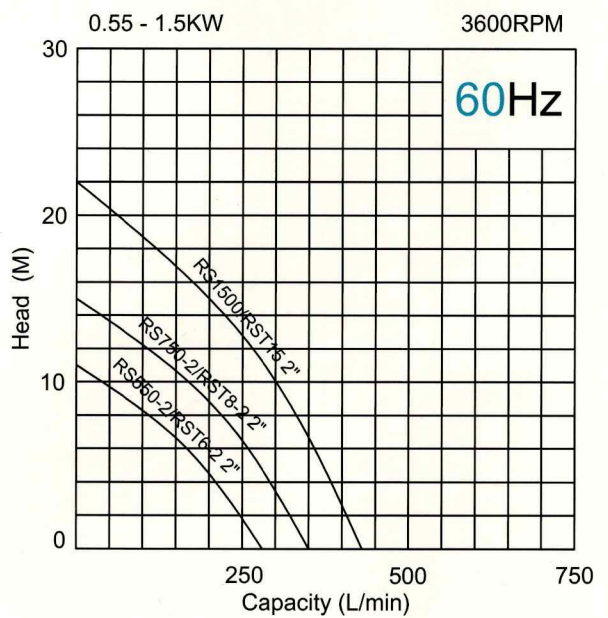
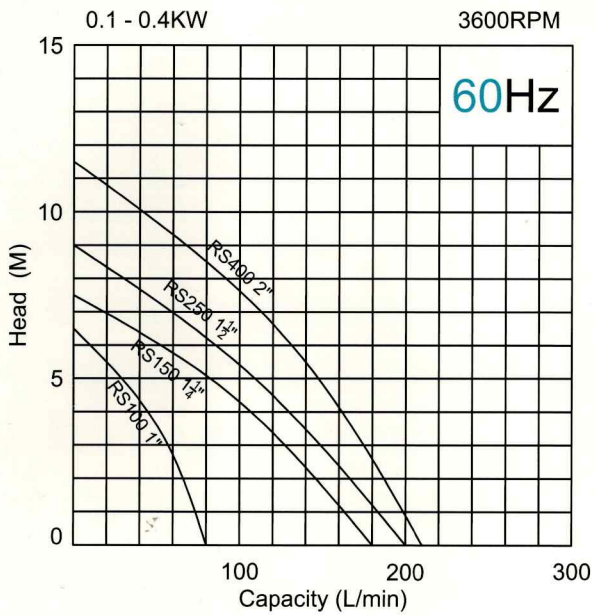
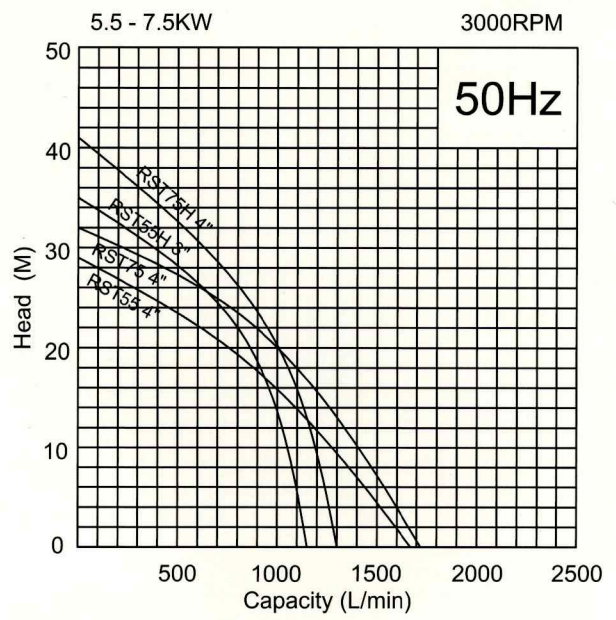
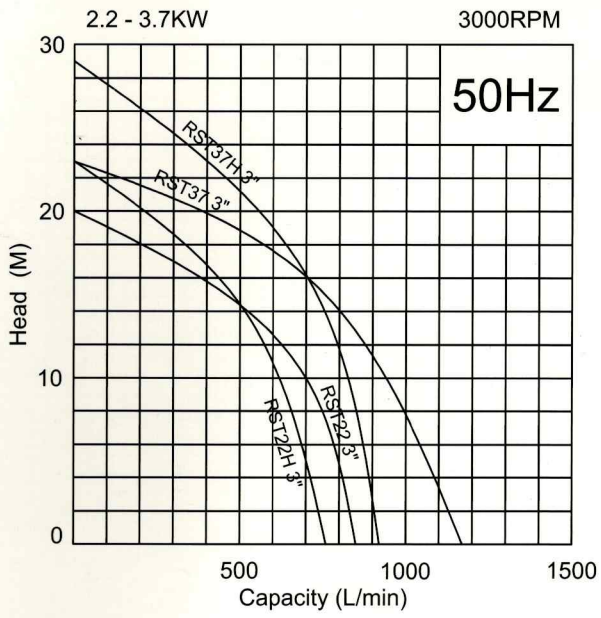


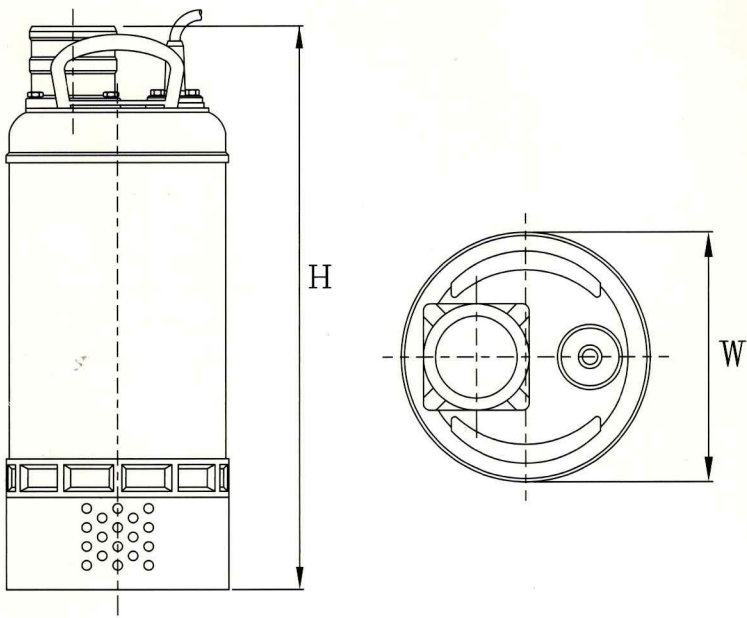
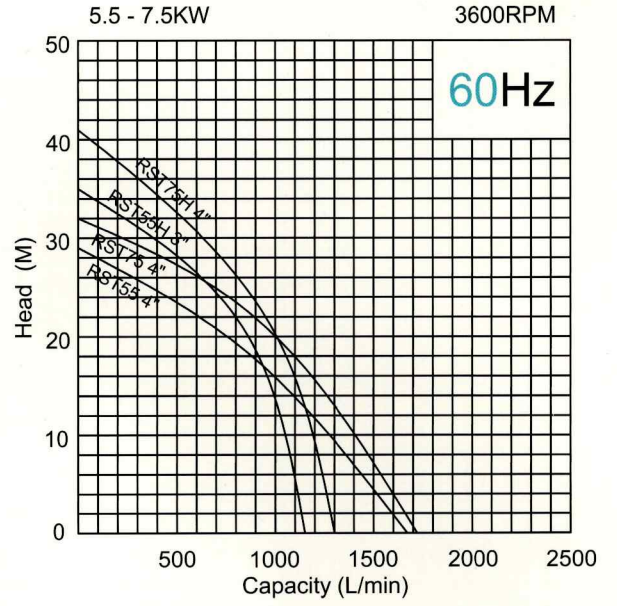
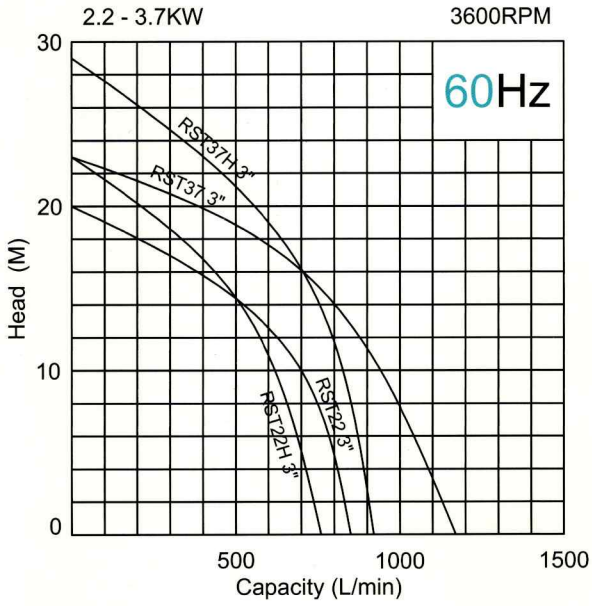
RS Performance Curve

50/60

Pump Type	Output KW	Output HP	Discharge Inch	Voltage	Max			Cable M	Weight kg	
					Head M	Capacity L/min	Solid mm			
RS100	0.1	0.14	1	1 phase 100V-240V	6.5/6.5	80/80	4	10	4.4	
RS150	0.15	0.2	1 $\frac{1}{4}$		7.5/7.5	180/180	4	10	5.5	
RS250	0.25	0.34	1 $\frac{1}{2}$		9/9	200/200	6	10	12	
RS400	0.4	0.5	2		11.5/11.5	210/210	6	10	12.5	
RS550-2	0.55	0.74	2		11/11	280/280	6	10	19.2	
RS750-2	0.75	1	2		15/15	345/345	6	10	19.5	
RS1500	1.5	2	2		21/21	445/445	6	10	30	
RST6-2	0.55	0.74	2	3 phase 200V-600V	11/11	280/280	6	10	20	
RST8-2	0.75	1	2		15/15	345/345	6	10	22	
RST15	1.5	2	2		22/22	435/435	6	10	29	
RST22	2.2	3	3		20/20	850/850	10	10	52	
RST22H	2.2	3	3		23/23	765/765	10	10	52	
RST37	3.7	5	3		3 phase 200V-600V	23/23	1170/1170	10	10	55
RST37H	3.7	5	3			29/29	920/920	10	10	55
RST55	5.5	7.5	4			29/29	1670/1670	10	10	90
RST55H	5.5	7.5	3			35/35	1155/1155	10	10	90
RST75	7.5	10	4			32/32	1720/1720	10	10	95
RST75H	7.5	10	4	41.5/41.5	1310/1310	10	10	95		







Dimensions (mm)

PUMP TYPE	PUMP SECTION	
	H	W
RS100	269	138
RS150	269	138
RS250	370	167
RS400	370	167
RS550-2	430	192
RS750-2	430	192
RS1500	531	182
RS1500H	531	182
RST6-2	430	192
RST8-2	430	192
RST15	491	182
RST15H	491	182
RST22	530	250
RST22H	530	250
RST37	535	250
RST37H	535	250
RST55	620	250
RST55H	600	250
RST75	685	250
RST75H	685	250