

Dimensions (mm)

PUMP TYPE	DISCHARGE BORE	PUMP SECTION		
	d	A	D	H
JS100	1"(25)	163	122	245
JS150	1¼"(32)	163	122	260
JS250	1½"(40)	200	148	338
JS400	2"(50)	215	148	383
JS750	2"(50)	251	190	477
JS1500	3"(80)	289	190	512
JS1500H	2"(50)	289	190	512
JST8	2"(50)	251	190	414
JST15	3"(80)	289	190	440
JST15H	2"(50)	289	190	440
JST22	3"(80)	313	220	503
JST22H	2"(50)	313	220	503
JST37	3"(80)	313	220	518
JST37	4"(100)	313	220	518
JST37H	2"(50)	313	220	518
JST55	4"(100)	572	270	639
JST55H	3"(80)	572	270	639
JST75	6"(150)	647	270	692
JST75H	4"(100)	572	270	692
JST110	6"(150)	647	270	692
JST110H	6"(150)	647	270	692
JST150	6"(150)	690	310	880
JST190	6"(150)	690	310	880
JST220	6"(150)	690	310	880



## JS Dewatering Pumps

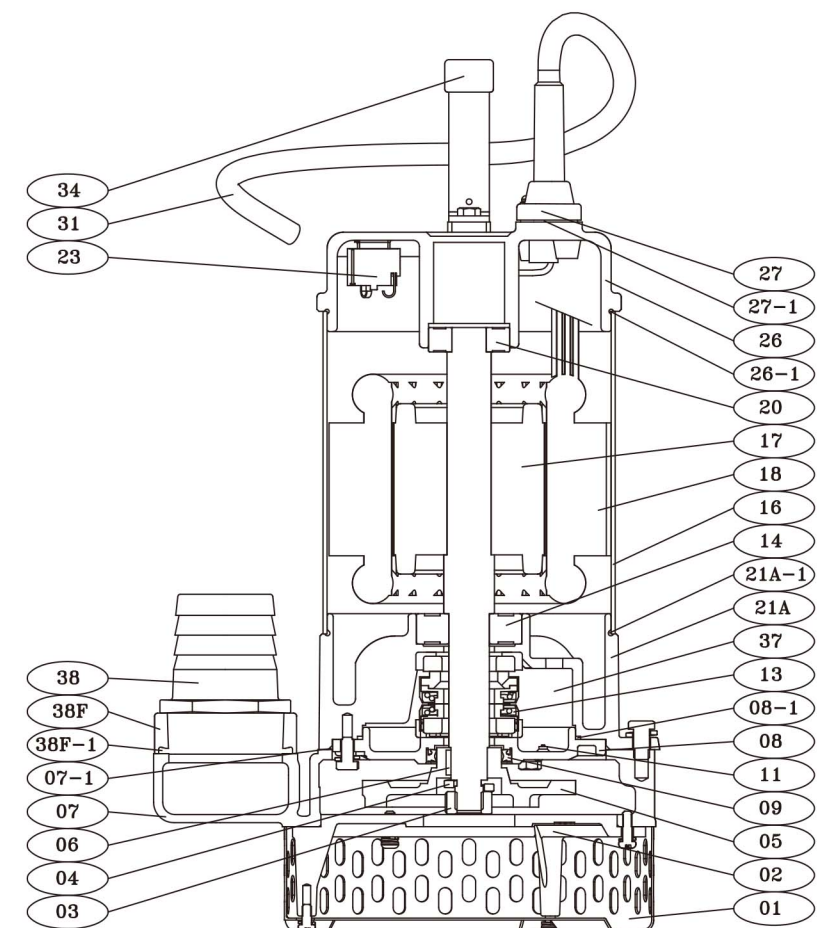
Effluent wastewater, sump emptying, general dewatering

All-around dewatering pumps that offers top performance and long service life. Some models are available in High Head construction to meet required performance. Slide rail kits available for easier and safer pumps maintenance.

### Construction Material

- Double mechanical seals (0.25kw and above).
- Class F motor insulation.
- Shaft sleeve saves on shaft wear due to abrasives and corrosion.
- Additional lip seal protection keeps impurities and abrasives away from the mechanical seals.
- Thermal overload protection guards against high amperage and high temperature.
- Enhanced cable entry sealing system.

NO.	DESCRIPTION	MATERIAL
01	STRAINER	SUS 304
02	SUCTION COVER	FC 200
03	NUT	SUS 304
04	WASHER	SUS 304
05	IMPELLER	FCD 400
06	KEY	SUS 304
07	PUMP HOUSING	FC 200
07-1	ORING	NBR
08	OIL CHAMBER COVER	FC 200
08-1	ORING	NBR
09	LIP SEAL (BOTTOM)	NBR
11	PLUGS	SUS 304
13	MECHANICAL SEAL	
14	BEARING (BOTTOM)	
16	MOTOR CASING	SUS 304
17	ROTOR SHAFT	SUS 304
18	STATOR	
20	BEARING (UP)	
21A	MOTOR BOTTOM COVER	FC 200
21A-1	ORING	NBR
23	OVERLOAD PROTECTOR	
26	UPPER COVER	FC 200
26-1	ORING	NBR
27	CABLE GLAND	
27-1	ORING	NBR
31	CABLE	PVC
34	HANDLE	
37	OIL	T-32
38	OUTLET	PP
38F	FLANGE	FC 200
38F-1	GASKET	NBR



# JS Performance Curve

Pump Type	Output KW	Output HP	Discharge Inch	Voltage	Max			Cable M	Weight kg
					Head M	Capacity L/min	Solid mm		
JS100	0.1	0.14	1	1 phase 100V-240V	6.5	80	4	10	5
JS150	0.15	0.2	1½		7.5	90	4	10	5.5
JS250	0.25	0.34	1½		9	195	6	10	11
JS400	0.4	0.5	2		11	240	6	10	13.5
JS750	0.75	1	2		14	355	6	10	24.5
JS1500	1.5	2	3		18	570	6	10	31
JS1500H	1.5	2	2	25	430	6	10	31	
JST8	0.75	1	2	3 phase 200V-600V	14.5	350	6	10	25
JST15	1.5	2	3		18	565	6	10	27
JST15H	1.5	2	2		22	435	6	10	26
JST22	2.2	3	3		20	865	10	10	39
JST22H	2.2	3	2		25	745	10	10	41
JST37	3.7	5	3 or 4		24	1375	10	10	45
JST37H	3.7	5	2		32	805	10	10	46
JST55	5.5	7.5	4		27	1945	10	10	90
JST55H	5.5	7.5	3		35	1320	10	10	90
JST75	7.5	10	6		33	1970	10	10	95
JST75H	7.5	10	4		44.5	1290	10	10	95
JST110	11	15	6		45	2140	10	10	100
JST110H	11	15	6		60	1470	10	10	100
JST150	15	20	6		47.5	2905	10	10	170
JST190	19	25	6	55.5	3045	10	10	180	
JST220	22	30	6	59	3070	10	10	190	

